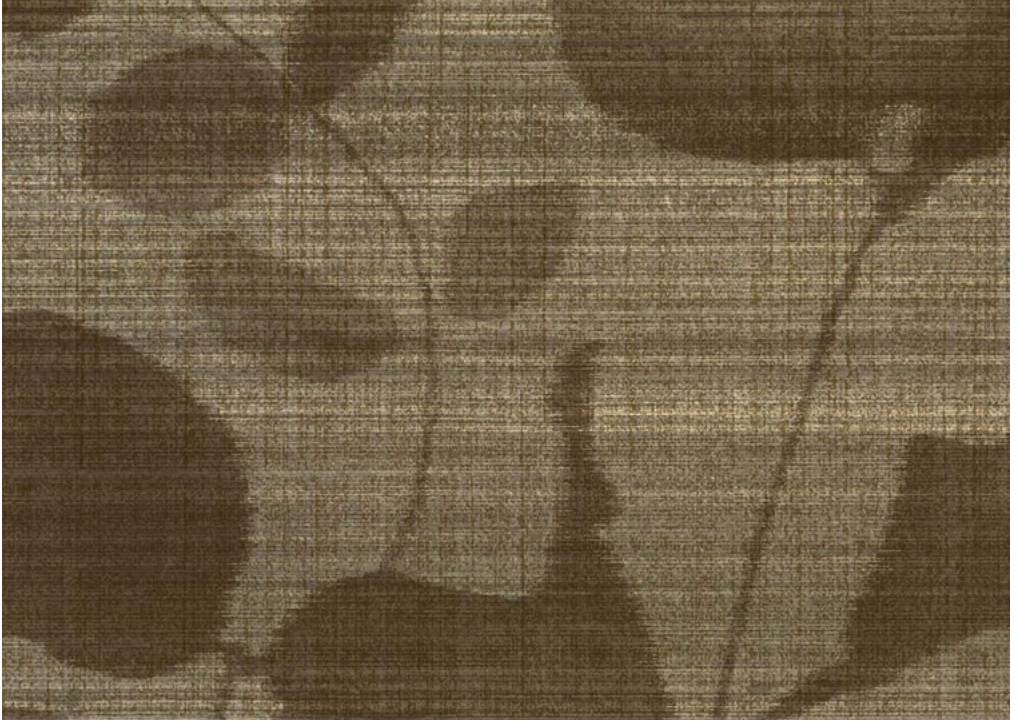


GENON

ESSENTIALS

Shadow Leaves

Render Ready Tiles available 



Mocha **W2-SL-06**

RECYCLED CONTENT LOW VOC 52" / TYPE II / 20 oz.

PHYSICAL PROPERTIES

WEIGHT 20 oz. PLY/620 G/PLM
13.3 oz. PSY/451 G/PSM

WIDTH 52" / 137 cm

BACKING Osnaburg

MATCH Straight Match

REPEAT 24"H x 52"W

Custom colors, weights, and micro venting available
Meets or exceeds Federal Specification CCC-W-408D

WARRANTY

5 year warranty against manufacturing defects.
Additional information is available at
genonwallcovering.com

ENVIRONMENT & HEALTH

- Low VOC, California section 01350 IAQ
- 10% Recycled content
- Non-Phthalate
- NSF/ANSI 342 certified
- EPD/HPD
- California Prop 65, no labeling required

FIRE SAFETY

- Class "A" Fire rated – Tested in accordance with ASTM E-84 Tunnel Test
- Passes Class "A" NFPA 101 Life Safety Code
- Passes NFPA 286 Corner Burn Test

See website or contact us for additional results

CLEANABILITY

- Inherent anti-microbial protection
- Withstands hospital-grade cleaners & disinfectants
- Available as a custom with
INVISICAP | complete **chemical** protection